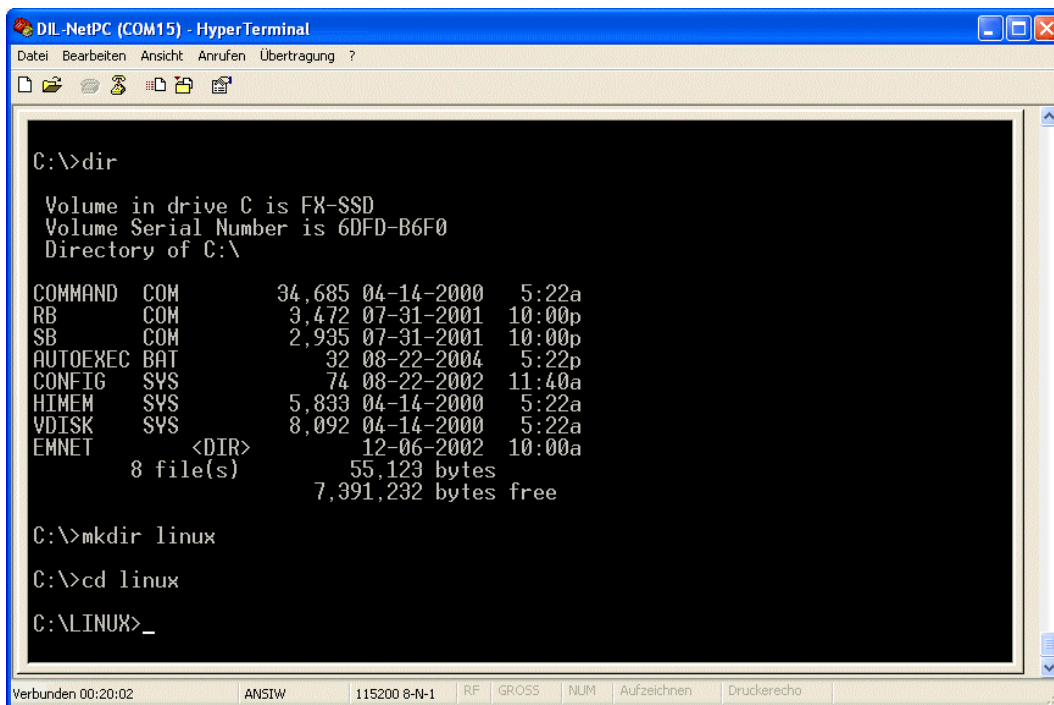


## How to running Linux from the ROM-DOS Environment

The DIL/NetPC ADNP/1520 supports ROM-DOS and Linux. It is possible to start a Linux configuration from DOS. It is also possible to boot a O/S Image file which starts the Linux O/S without the help of DOS. This document describes how to running Linux from the ADNP/1520 DOS environment.

- **1. Step:** Setup a serial link (**RS232 Serial Link**) between the DIL/NetPC ADNP/1520 COM1 serial port and a serial port of your PC system. Use a null-modem cable for the physical connection between the COM1 port of the DIL/NetPC ADNP/1520 and the PC COM port. For more details about this connection please use the *DIL/NetPC ADNP/1520 DNP/SK10 Starter Kit User Manual*.
- **2. Step:** Set-up the communication parameters for the PC terminal emulation program to 115.200 bps, 8 data bits, 1 stop bit, no parity bit and no handshaking (**115.200-8-N-1**). Run your PC terminal emulation program.
- **3. Step:** Set the RCM jumper for the ADNP/1520. Then power-up the ADNP/1520 for booting ROM-DOS. Create a new DOS directory **C:\Linux**. Change to this directory.



```

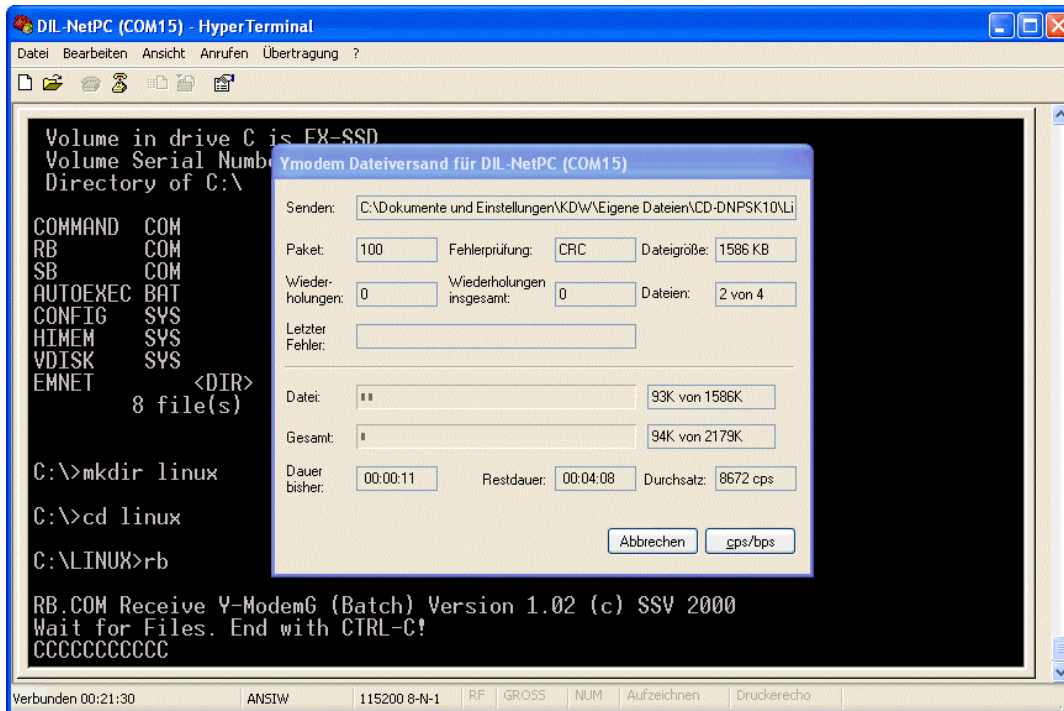
DIL-NetPC (COM15) - HyperTerminal
Datei Bearbeiten Ansicht Anrufen Übertragung ?
C:\>dir
Volume in drive C is FX-SSD
Volume Serial Number is 6DFD-B6F0
Directory of C:\

COMMAND  COM           34,685  04-14-2000   5:22a
RB        COM           3,472  07-31-2001  10:00p
SB        COM           2,935  07-31-2001  10:00p
AUTOEXEC  BAT            32  08-22-2004   5:22p
CONFIG    SYS             74  08-22-2002  11:40a
HIMEM     SYS           5,833  04-14-2000   5:22a
VDISK     SYS           8,092  04-14-2000   5:22a
EMNET     <DIR>          12-06-2002  10:00a
          8 file(s)          55,123 bytes
          7,391,232 bytes free

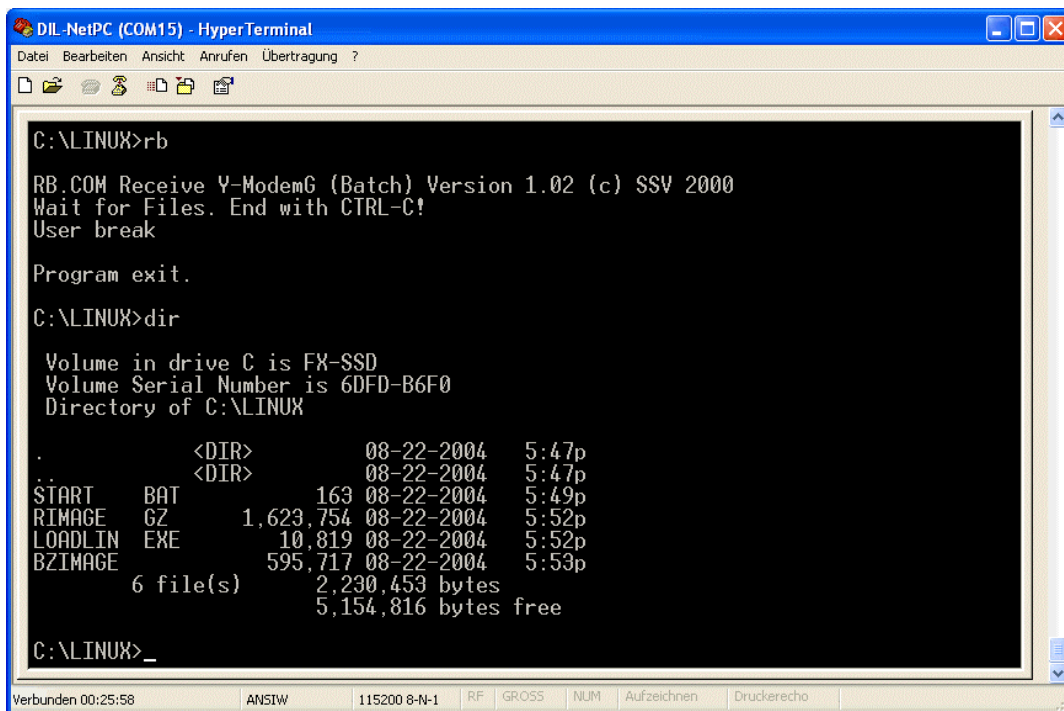
C:\>mkdir linux
C:\>cd linux
C:\LINUX>_
  
```

- **4. Step:** Run the DOS download program **rb** and transmit the four files of a ADNP/1520 Linux configuration for DOS (i.e. the files **loadlin.exe**, **rimage.gz**, **start.bat** and **zimage** or **bzimage**) from your DIL/NetPC ADNP/1520 Starter Kit CD-ROM to your ADNP/1520.

Use the **File Transmit function** of your terminal emulation program. Select the **Y-Modem** or **Y-Modem-G** protocol.

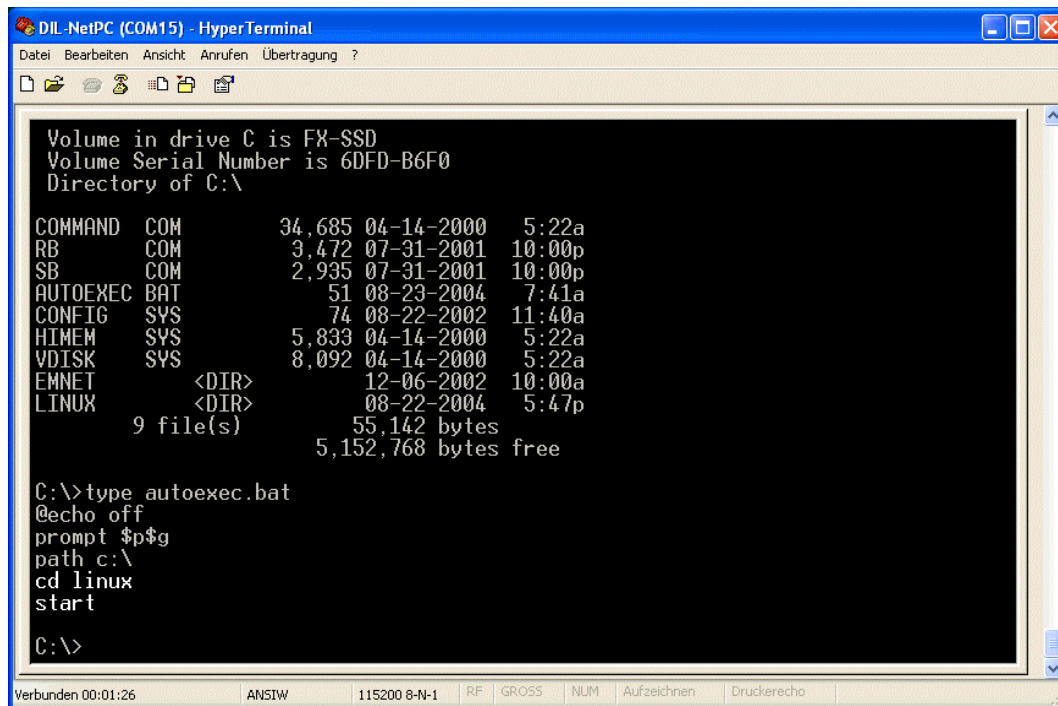


The download program `rb` needs some time to download and save the four files. Please wait until this program finish's.



- **5. Step:** Create a **AUTOEXEC.BAT** at **C:\** which starts the Linux automatically at boot time. The following pictures shows a **AUTOEXEC.BAT** sample.

Then reboot the ADNP/1520 for testing the new configuration. Watch the boot process with your PC terminal emulation program.



```
DIL-NetPC (COM15) - HyperTerminal
Datei Bearbeiten Ansicht Anrufen Übertragung ?
Volume in drive C is FX-SSD
Volume Serial Number is 6DFD-B6F0
Directory of C:\

COMMAND  COM           34,685  04-14-2000   5:22a
RB        COM           3,472  07-31-2001  10:00p
SB        COM           2,935  07-31-2001  10:00p
AUTOEXEC  BAT            51     08-23-2004   7:41a
CONFIG    SYS            74     08-22-2002  11:40a
HIMEM     SYS           5,833  04-14-2000   5:22a
VDISK     SYS           8,092  04-14-2000   5:22a
EMNET     <DIR>          12-06-2002  10:00a
LINUX     <DIR>          08-22-2004   5:47p
          9 file(s)          55,142 bytes
          5,152,768 bytes free

C:\>type autoexec.bat
@echo off
prompt $p$g
path c:\
cd linux
start

C:\>
```

Verbunden 00:01:26    ANSIW    115200 8-N-1    RF    GROSS    NUM    Aufzeichnen    Druckerecho

That is all.