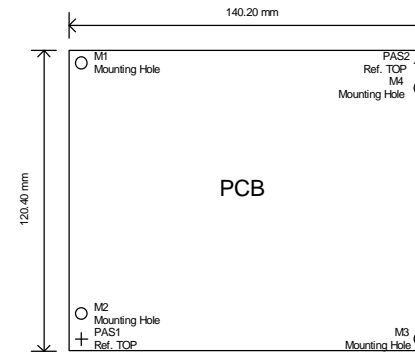
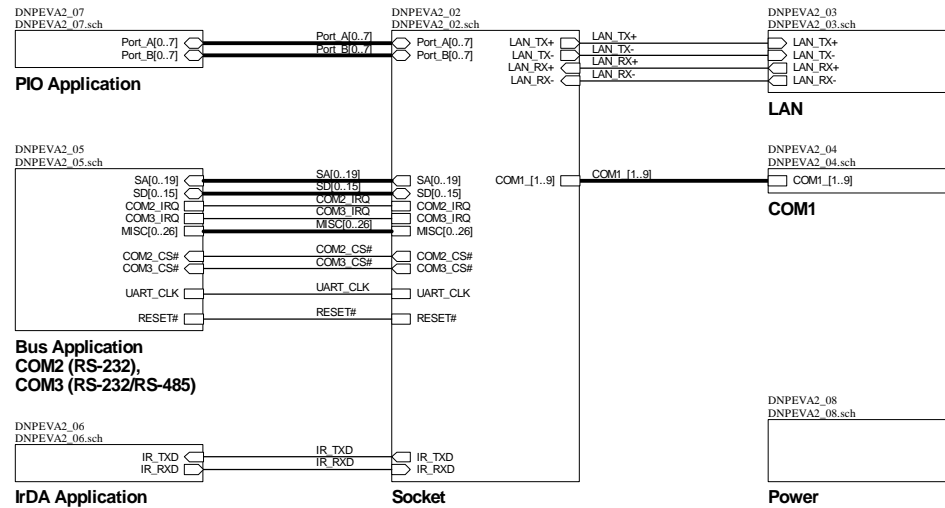


Basisboard for DIL/NetPC DNP/EVA2 Rev. 1.1



Anmerkung für den ADNP:
Um den ADNP im Remote Console Modus zu betreiben, muß Pin73 (#RCME) über einen 10kOhm Widerstand an Masse angeschlossen werden. Auf dem Evaluation Board des ADNP EVA2 ist dies bereits über einen Jumper realisiert.

SchBOM:RunSchBOM
Create Bill of Material

Netlist>CreateNetList
Create Netlist

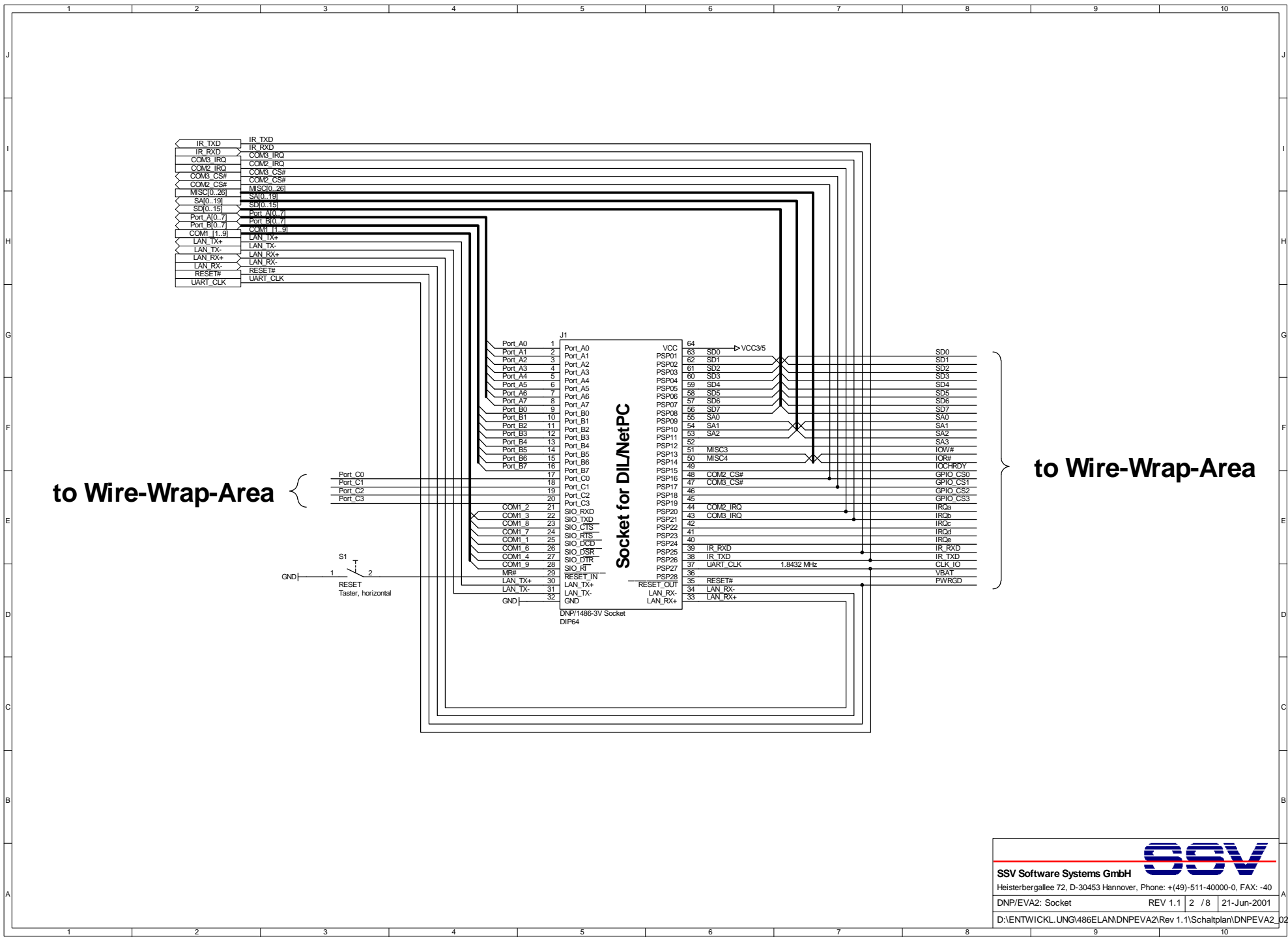
D:\ENTWICKLUNG\486ELANDNP\EVA2\Rev.1.1\Schaltplan\DNPEVA2_01.NET

SSV

SSV Software Systems GmbH
Heisterbergallee 72, D-30453 Hannover, Phone: +(49)-511-40000-0, FAX: -40

DNP/EVA2: Root	REV 1.1	1 / 8	21-Jun-2001
----------------	---------	-------	-------------

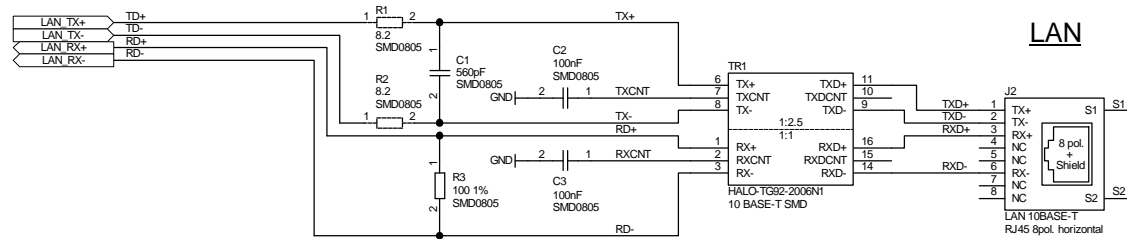
D:\ENTWICKLUNG\486ELANDNP\EVA2\Rev.1.1\Schaltplan\DNPEVA2_01.sch



to Wire-Wrap-Area

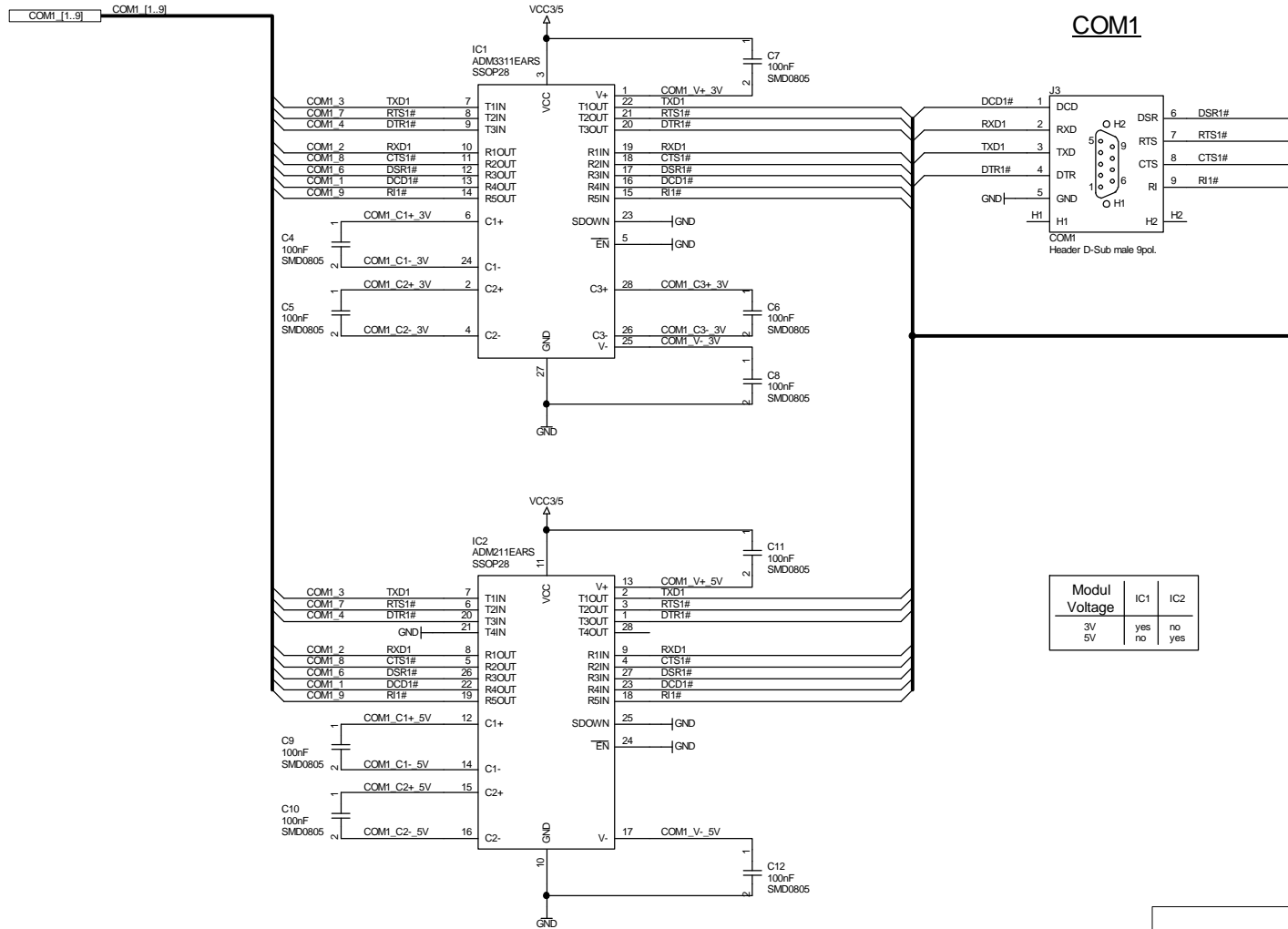
to Wire-Wrap-Area

SSV
 SSV Software Systems GmbH
 Heisterbergallee 72, D-30453 Hannover, Phone: +(49)-511-40000-0, FAX: -40
 DNP/EVA2: Socket REV 1.1 2 / 8 | 21-Jun-2001
 D:\ENTWICKL\UNG486ELANDNP/EVA2\Rev 1.1\Schaltplan\DNPEVA2_02.sch



LAN

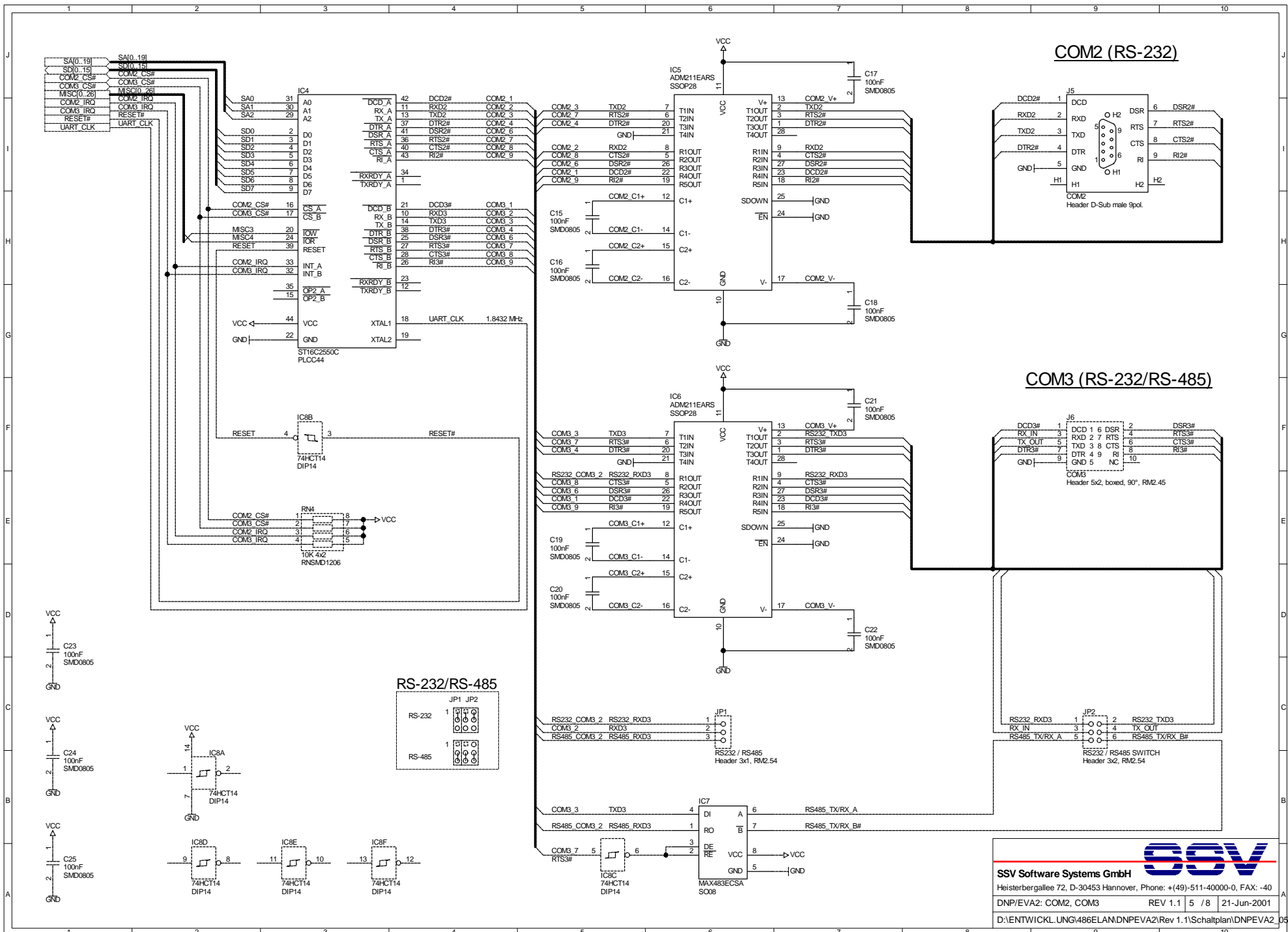
SSV
SSV Software Systems GmbH
 Heisterbergallee 72, D-30453 Hannover, Phone: +(49)-511-40000-0, FAX: -40
 DNP/EVA2: LAN REV 1.1 3 / 8 21-Jun-2001
 D:\ENTWICKL.UNG\486ELAND\DNPEVA2\Rev 1.1\Schaltplan\DNPEVA2_03.sch



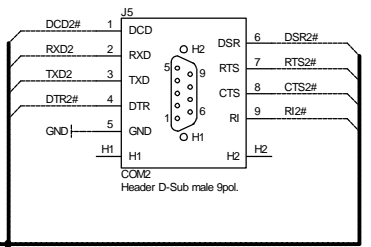
COM1

Modul Voltage	IC1	IC2
3V	yes	no
5V	no	yes

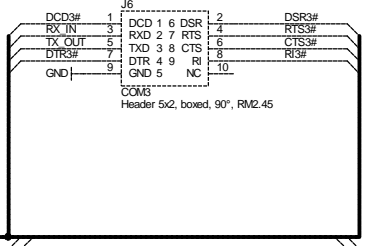
SSV
SSV Software Systems GmbH
 Heisterbergallee 72, D-30453 Hannover, Phone: +(49)-511-40000-0, FAX: -40
 DNP/EVA2: COM1 REV 1.1 4 / 8 | 21-Jun-2001
 D:\ENTWICKL\UNG\486ELAND\DNPEVA2\Rev 1.1\Schaltplan\DNPEVA2_04.sch



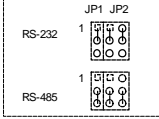
COM2 (RS-232)



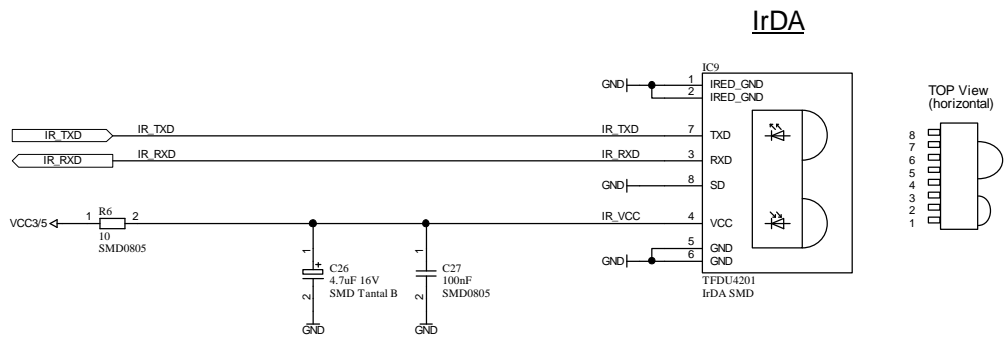
COM3 (RS-232/RS-485)



RS-232/RS-485

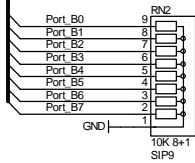
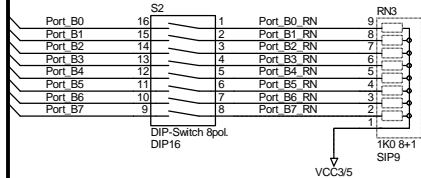


SSV Software Systems GmbH
 Heisterbergallee 72, D-30453 Hannover, Phone: +(49)-511-40000-0, FAX: -40
 DNP/EVA2: COM2, COM3 REV 1.1 5 / 8 | 21-Jun-2001
 D:\ENTWICKL\UNG\486ELAN\DNPEVA2\Rev 1.1\Schaltplan\DNPEVA2_05.sch

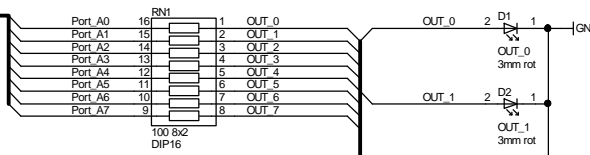


Port A[0..7]
Port B[0..7]

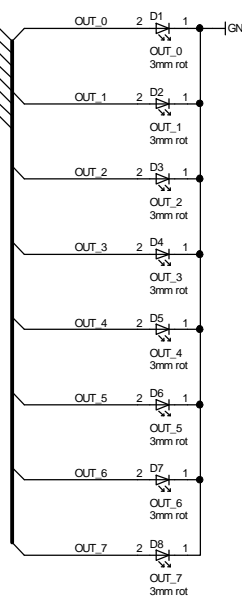
Port A[0..7]
Port B[0..7]



INPUT



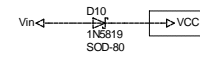
Modul Voltage	RN1
3V	100 Ohm, 8x2, DIP16
5V	220 Ohm, 8x2, DIP16



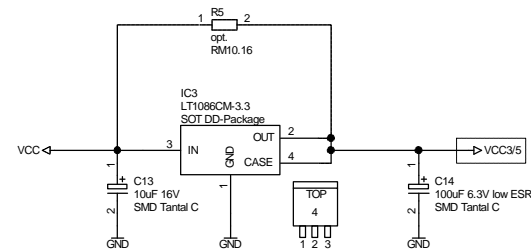
OUTPUT

SSV
SSV Software Systems GmbH
 Heisterbergallee 72, D-30453 Hannover, Phone: +(49)-511-40000-0, FAX: -40
 DNP/EVA2: PIO Application REV 1.1 7 / 8 21-Jun-2001
 D:\ENTWICKL.UNG\486ELAND\DNPEVA2\Rev 1.1\Schaltplan\DNPEVA2_07.sch

Protection Circuit



Power Generation

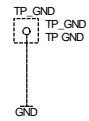
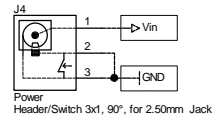


Modul Voltage	IC3	R5
3V	yes	no
5V	no	0 Ohm

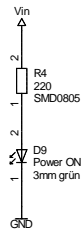
Power IN

Important

Vin must not exceed 5.25V



Power LED



SSV
SSV Software Systems GmbH
 Heisterbergallee 72, D-30453 Hannover, Phone: +(49)-511-40000-0, FAX: -40
 DNP/EVA2: Power REV 1.1 8 / 8 | 21-Jun-2001
 D:\ENTWICKL.UNG\486ELAND\DNPEVA2\Rev 1.1\Schaltplan\DNPEVA2_08.sch